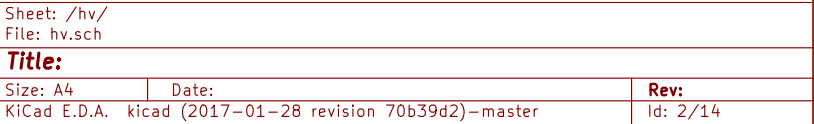
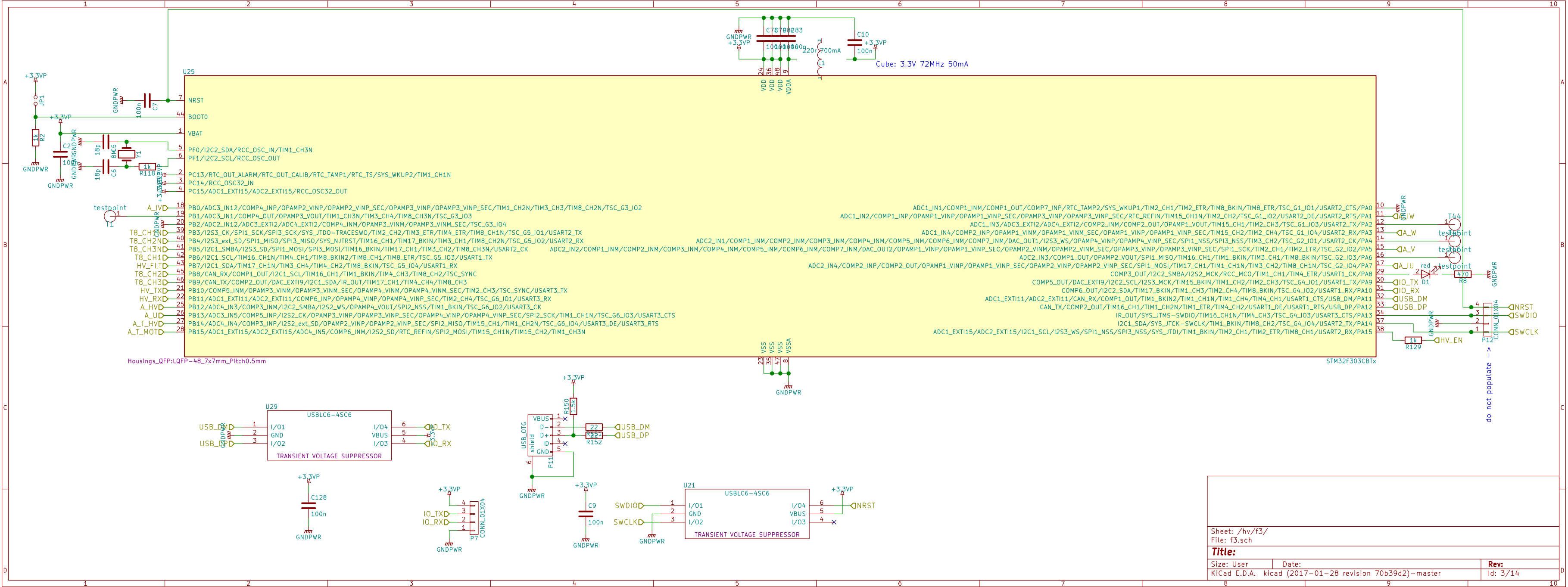
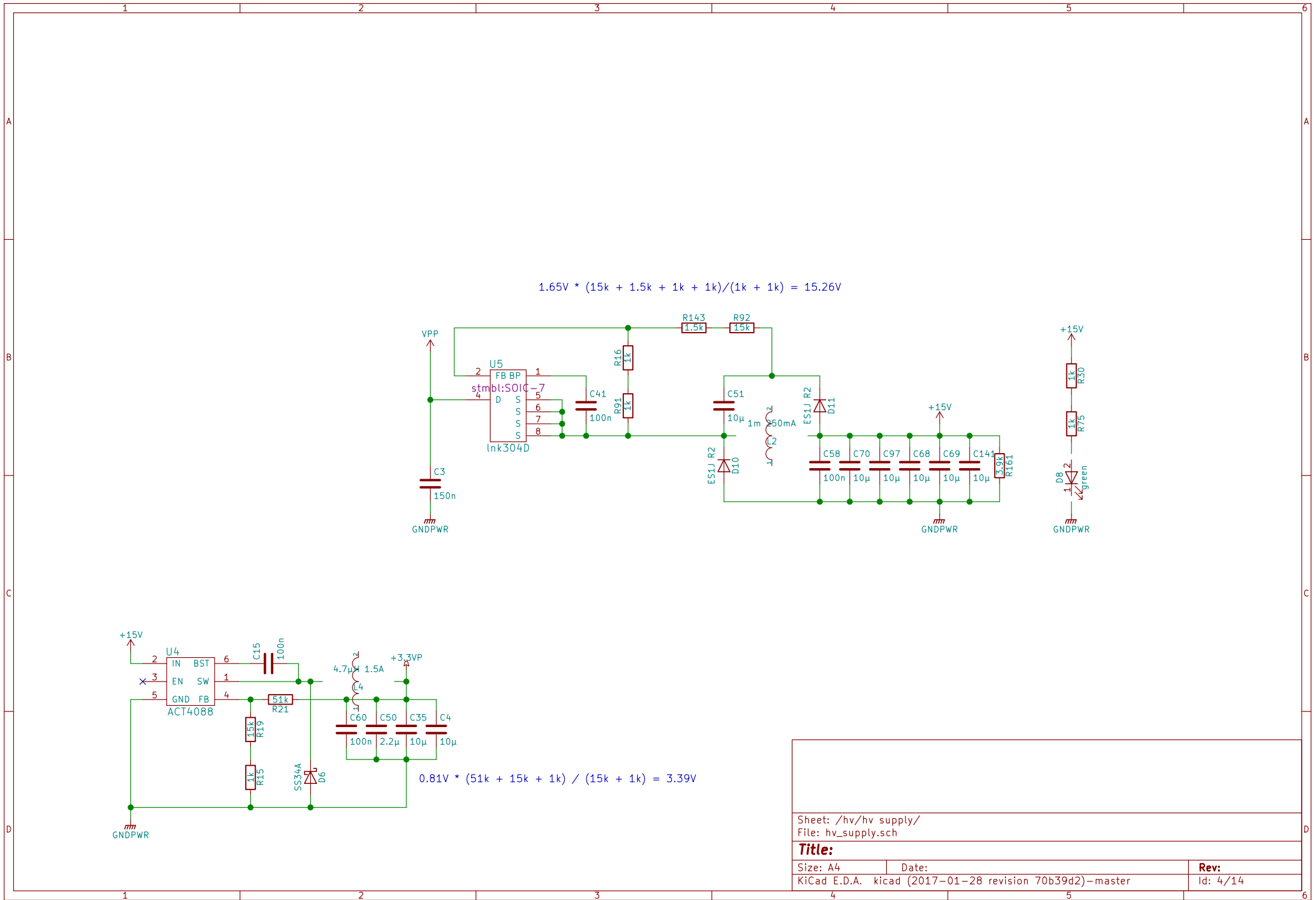


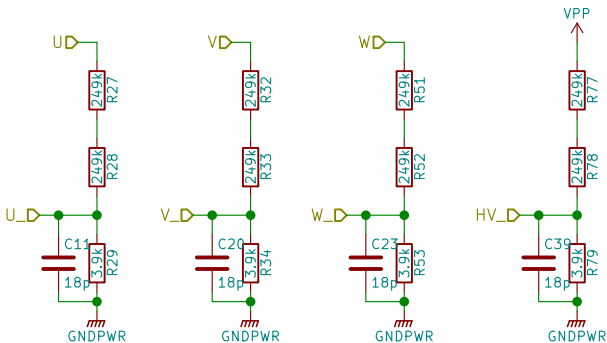
Sheet: /		
File: stmbL_4.0.sch		
Title:		
Size: A4	Date:	Rev:
KiCad E.D.A. kicad (2017-01-28 revision 70b39d2)-master		Id: 1/14



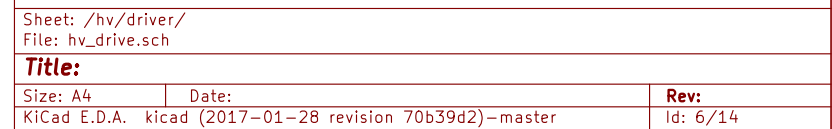


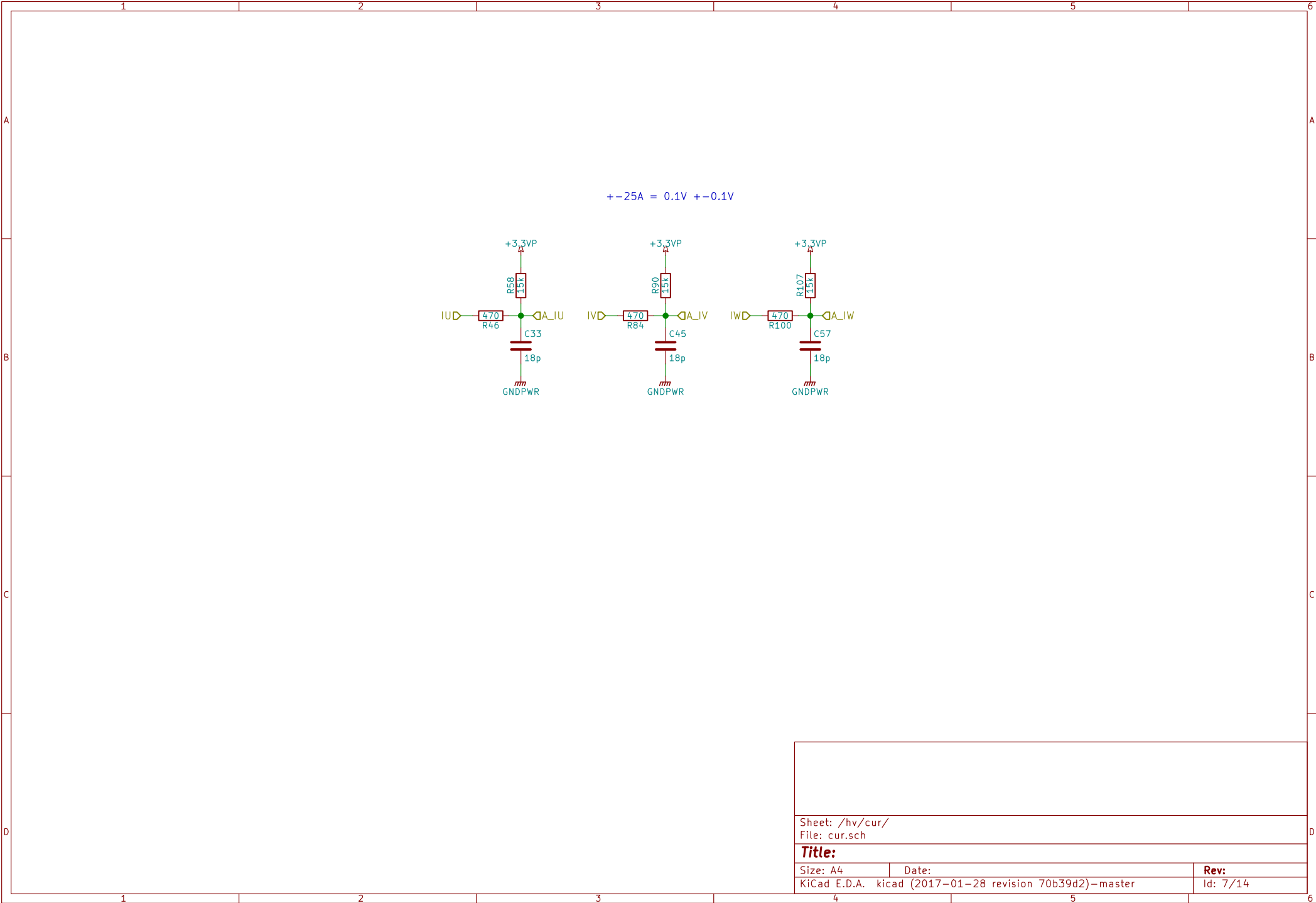


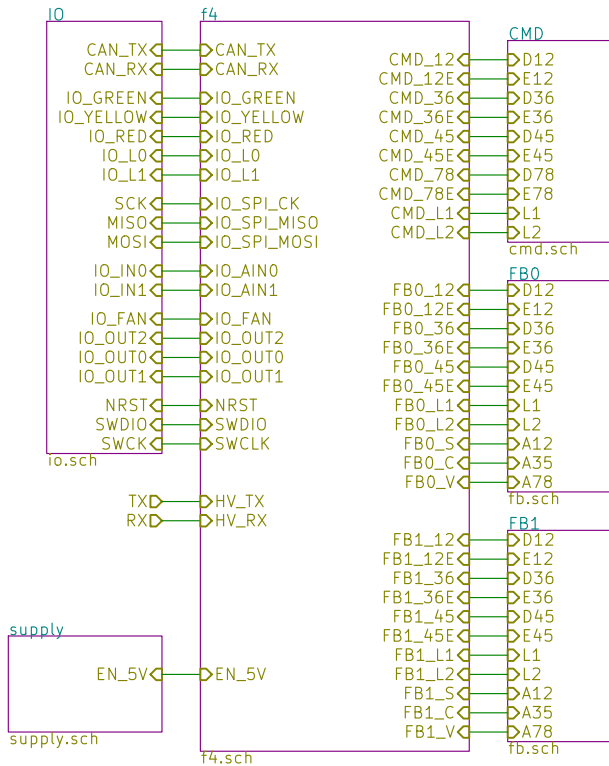
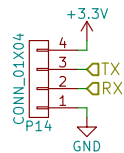
$3.3V * (249k + 249k + 3.9k) / 3.9k = 424V$



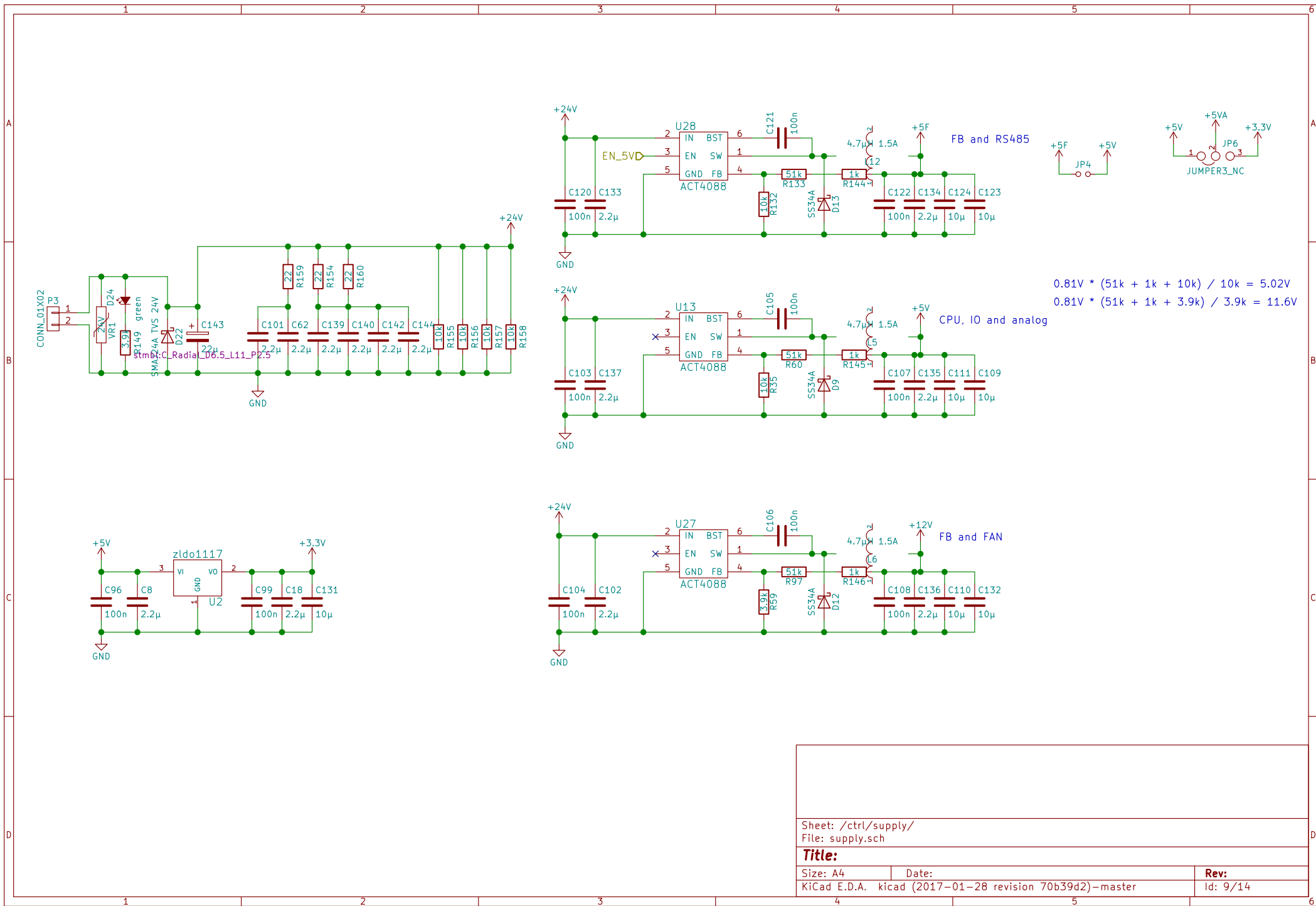
Sheet: /hv/back-emf/ File: hv_sense.sch		
Title:		
Size: A4	Date:	Rev:
KiCad E.D.A. kicad (2017-01-28 revision 70b39d2)-master		Id: 5/14

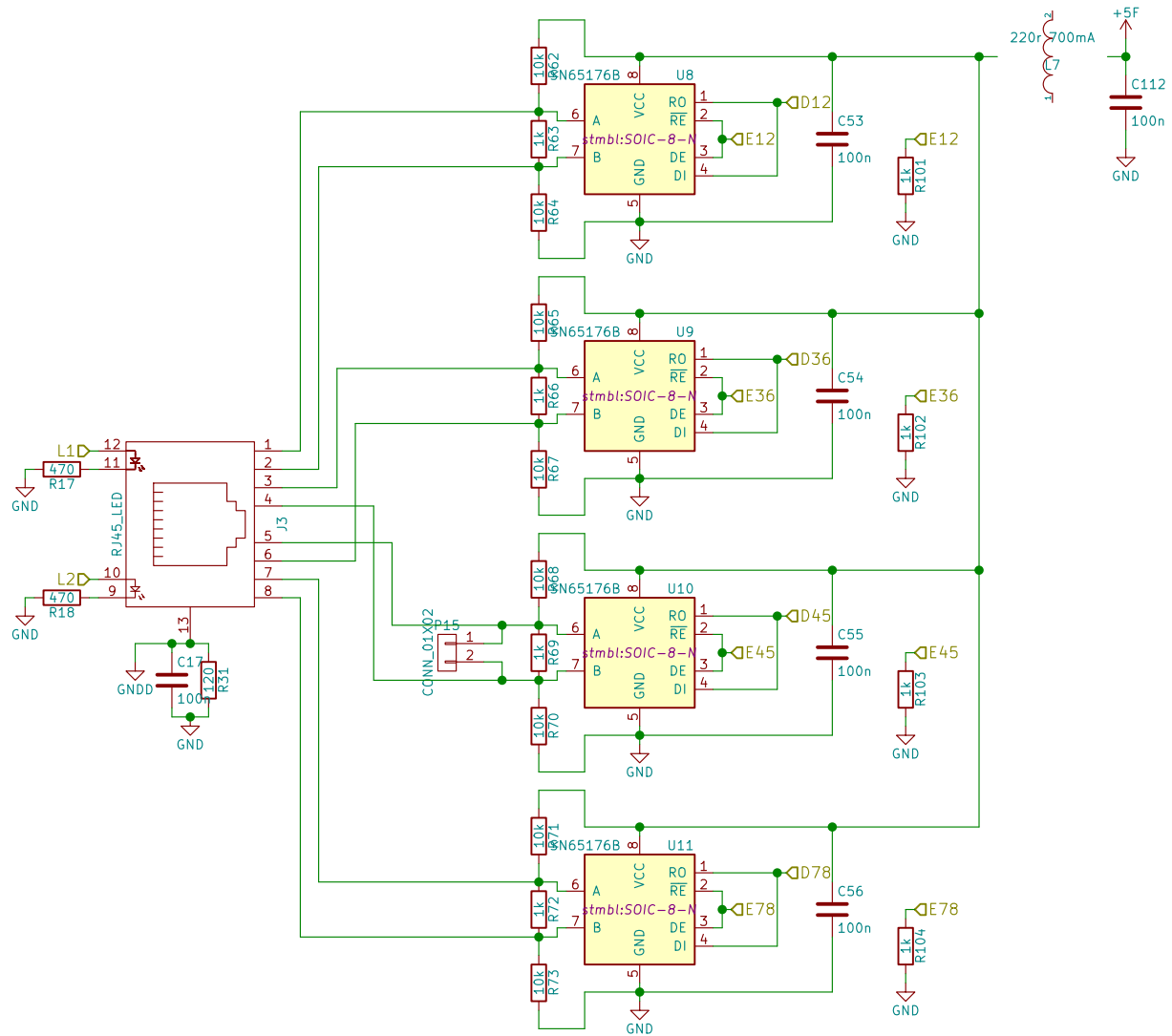






Sheet: /ctrl/ File: ctrl.sch		
Title:		
Size: A4	Date:	Rev:
KiCad E.D.A. kicad (2017-01-28 revision 70b39d2)-master		Id: 8/14





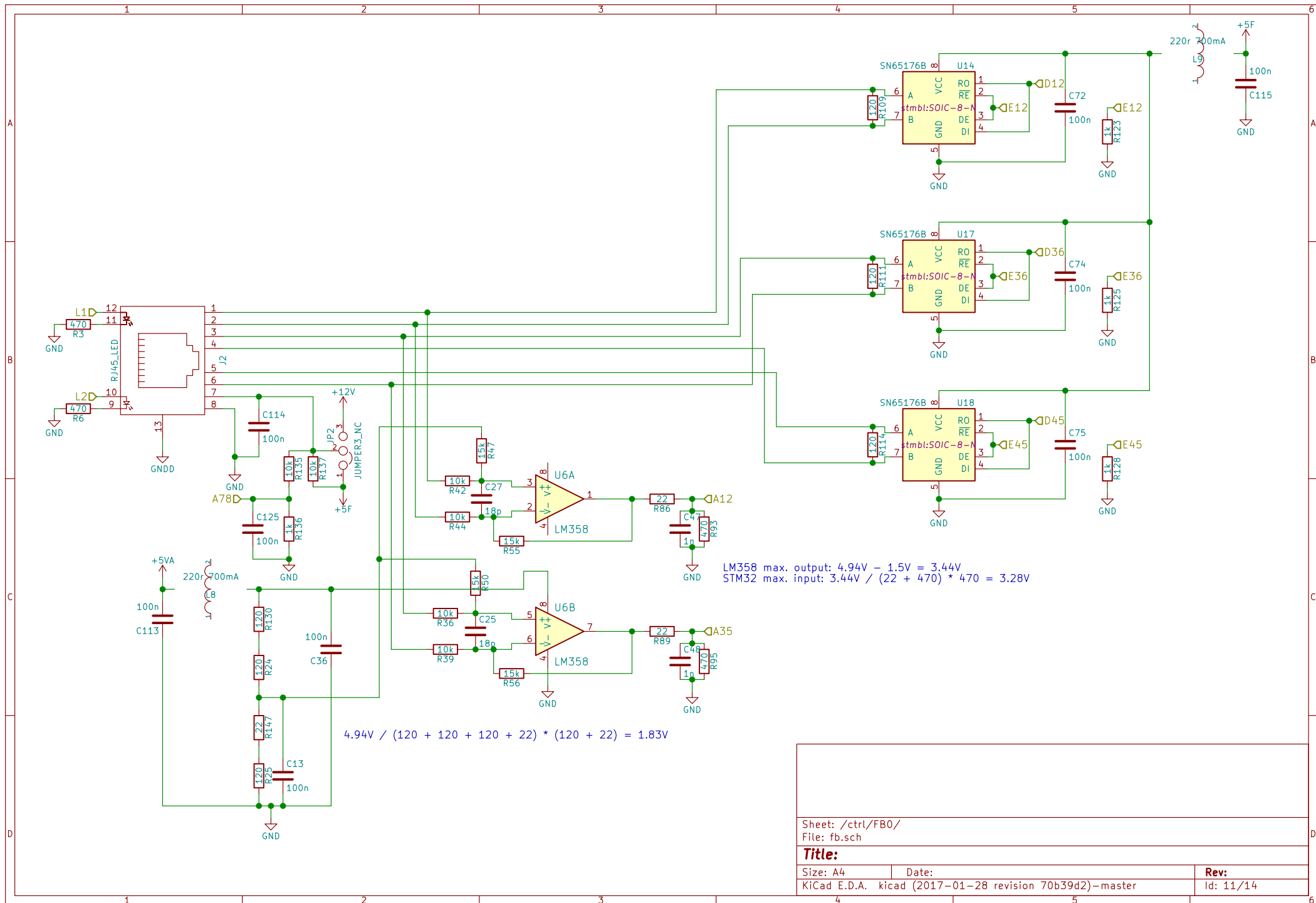
Sheet: /ctrl/CMD/
File: cmd.sch

Title:

Size: A4
KiCad E.D.A. kicad (2017-01-28 revision 70b39d2)-master

Date:

Rev:
Id: 10/14



LM358 max. output: $4.94V - 1.5V = 3.44V$
STM32 max. input: $3.44V / (22 + 470) * 470 = 3.28V$

$$4.94V / (120 + 120 + 120 + 22) * (120 + 22) = 1.83V$$

