

Figure S1. Effect of exogenous MT on photosynthetic characteristics of red clover seedlings under different types of salt stress. **(A)** Changes in leaf length under different treatments; **(B)** Changes in leaf width under different treatments. The error bar in the figure represents the standard deviation (SD, n=3). Different letters indicate significant differences by Tukey's test ($p < 0.05$).

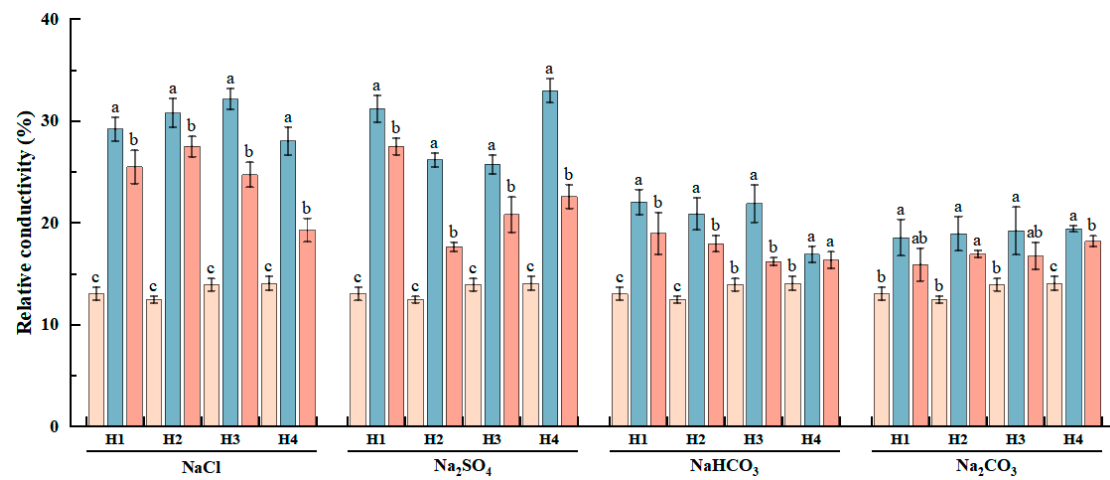


Figure S2. Effect of exogenous MT on the relative conductivity of red clover seedlings under different salt stresses. The error bar in the figure represents the standard deviation (SD, n=3). Different letters indicate significant differences by Tukey's test ($p < 0.05$).

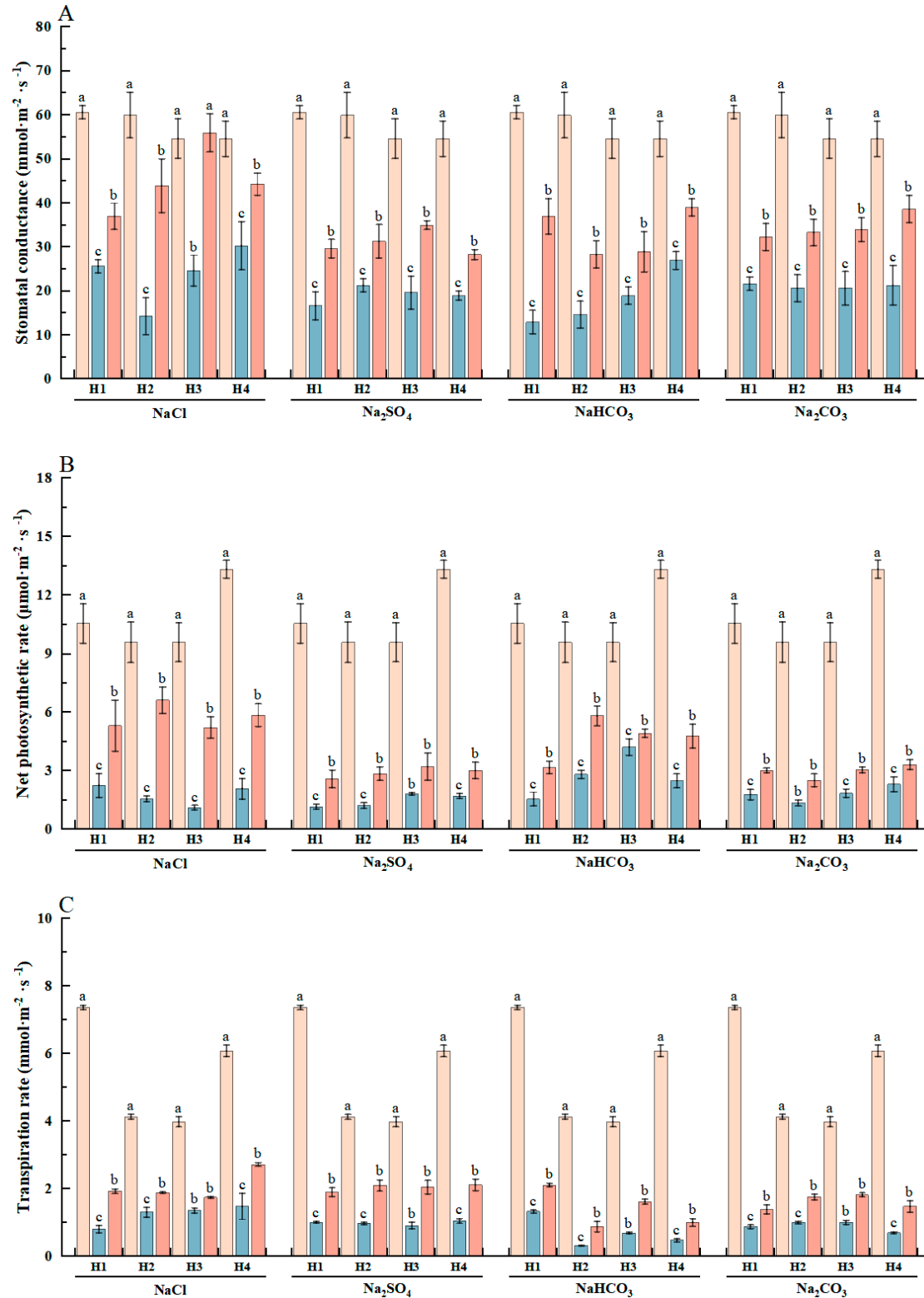


Figure S3. Effect of exogenous MT on photosynthetic characteristics of red clover seedlings under different types of salt stress. (A) Changes in net photosynthetic rate under different treatments; (B) changes in stomatal conductance under different treatments; (C) changes in transpiration rate under different treatments. The error bar in the figure represents the standard deviation (SD, $n=3$). Different letters indicate significant differences by Tukey's test ($p < 0.05$).