

Figure S1. Gel electrophoresis results of *DsRed2* amplification based on the genomic DNA extracted from one leaf of each injected *P. notoginseng* plant. PT15-PT72, injected *P. notoginseng* plants. WT, wild type *P. notoginseng* plants. +, pCAMBIA2300::35S::DsRed2 plasmids.

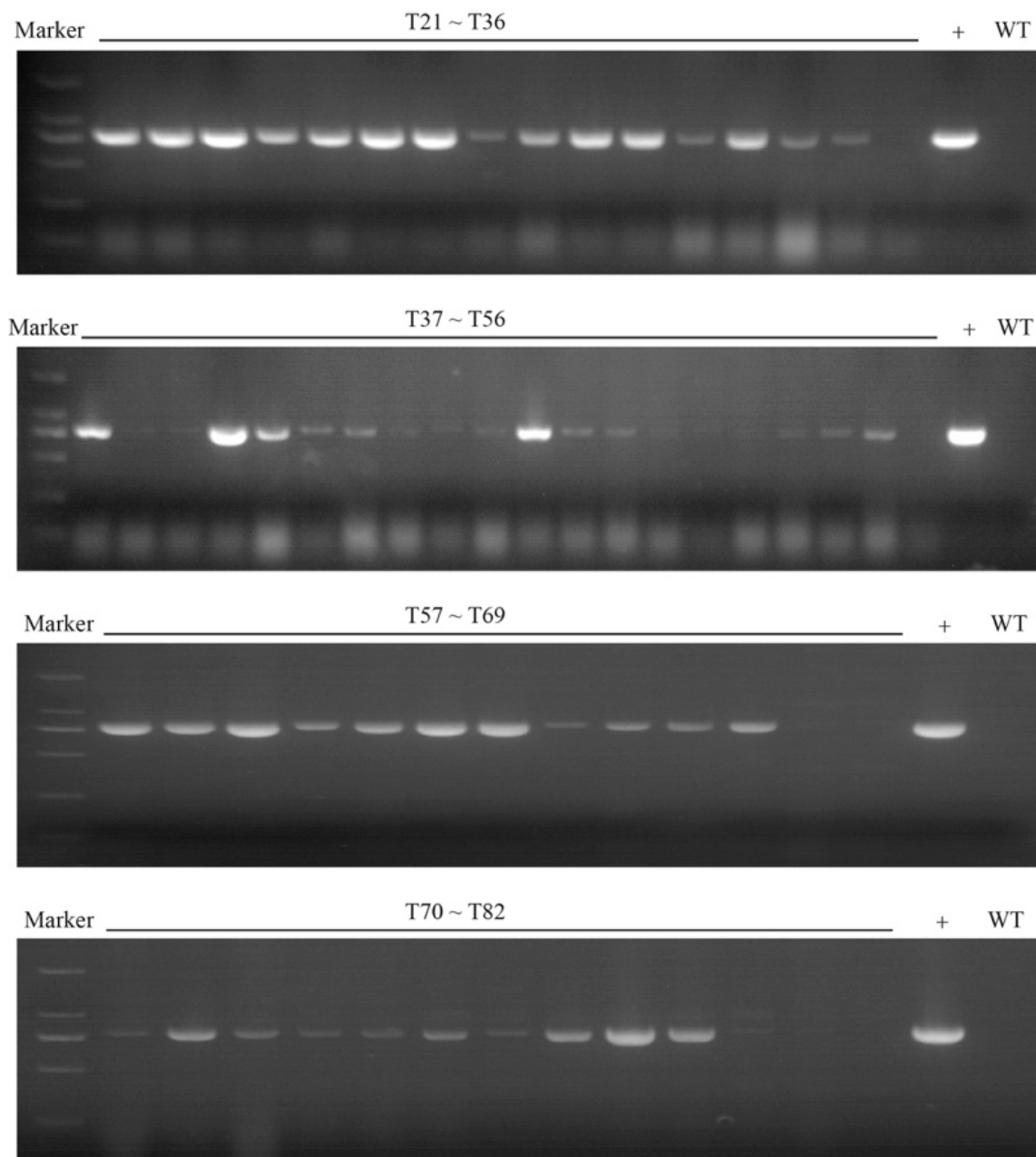


Figure S2. Gel electrophoresis showing *DsRed2* amplification from based on the genomic DNA extracted from one leaf of each injected *L. regale* plants. T-21~T-82, injected *L. regale* plants. WT, wild type *L. regale* plants. +, pCAMBIA2300::35S::DsRed2 plasmids.

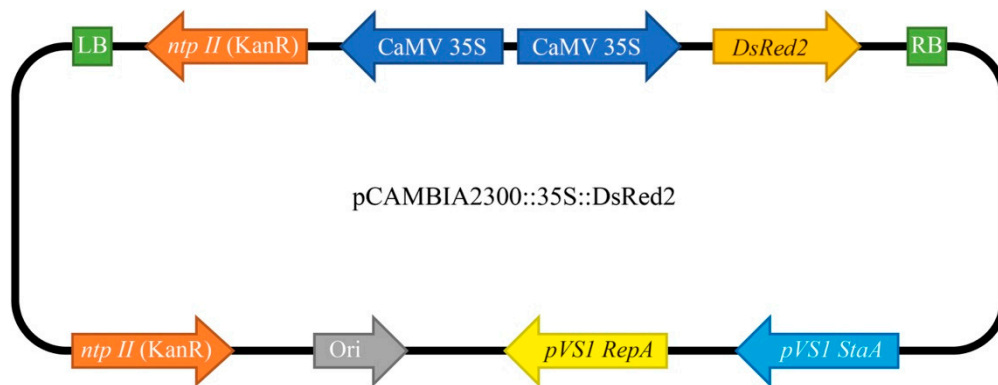


Figure S3. The schematic representation of pCambia2300::35S::DsRed2 vector. LB, left border repeat from nopaline C58 T-DNA. RB, right border repeat from nopaline C58 T-DNA. *npt II* (KanR), aminoglycoside phosphotransferase. CaMV35S, strong constitutive promoter from cauliflower mosaic virus. Ori, high-copy-number ColE1/pMB1/pBR322/pUC origin of replication. *pVS1 RepA*, replication protein from *Pseudomonas* plasmid pVS1. *pVS1 StaA*, stability protein from *Pseudomonas* plasmid pVS1.

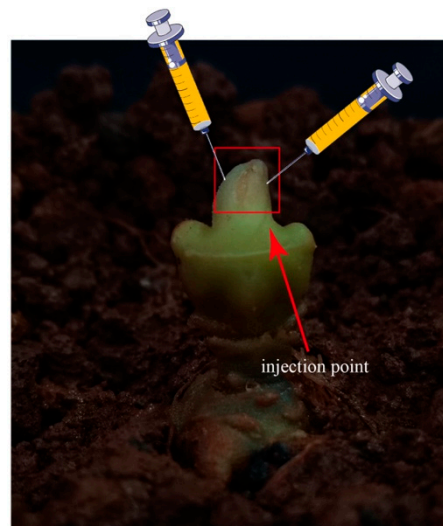


Figure S4. The injection position diagram of the *P. notoginseng* rhizome.

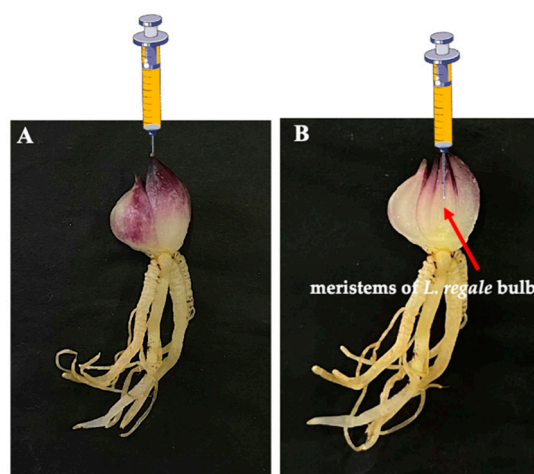


Figure S5. The injection position diagram of the *L. regale* bulb. (A) The injection position diagram of one-year old *L. regale* bulb. (B) The cross-sectional schematic diagram of injection position of *L. regale* bulb.